

TENA, the worldwide leader in the management of adult incontinence, has conducted an assessment in over 85 care homes to review the impact that TENA Solutions has on improving incontinence management¹



TENA Solutions improves residents' quality of life

8 OUT OF 10

Care home staff agree that TENA Solutions:

- Improves resident dignity, sleep and well-being

dignity



sleep



well-being



AROUND 70%

of care home staff say:

- It's easier for residents to join in social activities
- They spend less time managing incontinence and more time with the residents
- The working environment has improved



social activities



more time



working environment improved

TENA Solutions gives residents time to enjoy life and is time efficient for care home staff



What care home staff say about TENA products

- 80% of those surveyed say TENA products are:
 - More discreet and comfortable
 - Involve less heavy twisting and lifting
- Around 85% of care home staff felt that these products were easier to handle during pad changes and toileting, had an improved fit and had an increased capacity to keep the skin dry
- Almost three quarters agreed that odor control had improved as a result of using these products



less twisting and lifting



comfortable



easy to handle



improved odor

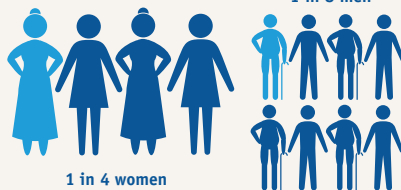
Incontinence refers to the involuntary loss of bladder or bowel control and it can vary from person to person in terms of severity

Incontinence is a serious health and social care issue that affects the lives of about 400 million people worldwide and over 25 million people in Europe²

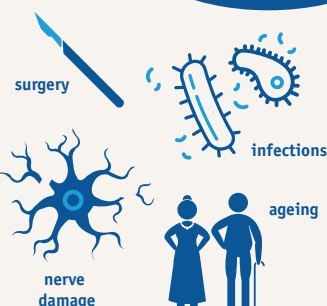
400m people



25m people



1 in 4 women and 1 in 8 men will be affected at some stage during their lives³



Incontinence can be caused by many things such as the effects of surgery, nerve damage, infection and changes associated with ageing

About incontinence



About TENA Solutions

Overall improvements achieved with TENA Solutions are the result of a unique and structured way of TENA and care homes working together in partnership. The TENA team train, coach and support care home staff as they implement proven routines, tools and the right innovative products for each individual resident.

1. SCA data on file (staff questionnaires): All statistics are based on results from between 85-103 TENA Solutions case studies involving 913-1105 respondents (depending on question) around the world, mainly Europe but also USA and Canada. Results vary across countries and care homes. 2012-14.
2. 5th Global Forum on Incontinence. Better care, better health – towards a framework for better continence solutions. Conference Summary report. Accessed October 2015 and available here: <http://www.giforum.com/Documents/Madrid-2014/Conference%20Summary%20Report%205th%20GFI.pdf>
3. About Incontinence, TENA. Accessed in October 2015, available here: http://www.tena.ca/about-incontinence/about-incontinence_en_CA.pg.html