

# EDEMA MANAGEMENT MADE SIMPLE



JOBST®

DEFY GRAVITY

JOBST® FarrowWrap®



# WHY JOBST® FarrowWrap®...

## HOW IT WORKS

How does a JOBST® FarrowWrap® achieve compression?

- Utilizes special fabrics with smart elastic short-stretch bands comprised of multi-layered fabrics
- Optimizes width of bands and amount of band overlap from bottom to top

It is important that every band of a JOBST® FarrowWrap® garment be applied at or near end-stretch. Having a consistent amount of tension throughout the garment helps to ensure graduated compression.

The Elastic Short-Stretch™ fabrics provide sustained resting compression while also augmenting the calf-muscle pump to deliver high working compression.

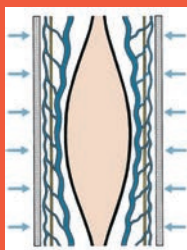
## BENEFITS

- Easy use of the simple VELCRO® Brand hook & loop system saves therapists' and patients' time, and supports easy donning and doffing for maximum or optimal patient independence
- Since the product is adjustable, fluctuating edema levels can be more easily managed by the patients themselves, empowering them to control their own care
- The variety of styles and sizes available in Ready-to-Wear (RTW), Trim-to-Fit (TTF), Custom-Made (CM) ensures there is a FarrowWrap® to meet a broad range of clinical needs

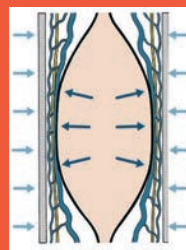


## CHARACTERISTICS OF SHORT-STRETCH TECHNOLOGY

- Allows creation of products with different compression levels at end-stretch
- Provides augmentation of the body's natural muscle pump action
- Maximizes calf muscle function
- Helps minimize swelling throughout the day once garment is donned
- Provides higher compression when the patients stand or are active and less when they are not



The pressure, exerted onto the body from the outside when the muscles at rest, is called "resting pressure"



The pressure exerted onto the body from the inside as the muscle activates and expands, is called the "working pressure"

Short-stretch bandages deliver a low resting pressure and a high working pressure, producing a massaging effect on the calf muscle when the patient is active, which in turn produces a subsequent increase in lymphatic return. This makes short-stretch systems very effective in the management of lymphedema.

# THE JOBST® FarrowWrap® PRODUCT RANGE

Adaptable and Affordable, Comfortable and Containing

## LITE

A double-laminated fabric suitable for mild to moderate compression needs, making it especially suitable for home care use / self-management patients. The fabric is durable.

### Available versions

- Upper and lower limb
- Ready-to-Wear (RTW)
- Trim-To-Fit (TTF)
- Custom-Made (CM)

**20-30 mmHg\*** Mild to moderate chronic edema / lymphedema



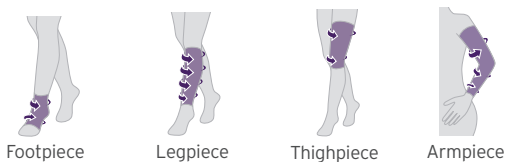
## STRONG

Premium fabric with strong compression and soft inner layer suitable for patients with a good limb shape and moderate to severe edema.

### Available versions

- Upper and lower limb
- Ready-to-Wear (RTW)
- Trim-To-Fit (TTF)
- Custom-Made (CM)

**30-40 mmHg\*** Moderate to severe chronic edema / lymphedema with a good limb shape



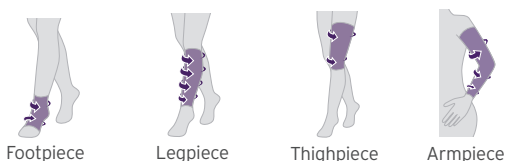
## CLASSIC

The original material that has been proven over many years of use on thousands of patients worldwide.

### Available versions

- Upper and lower limb
- Ready-to-Wear (RTW)
- Custom-Made (CM)

**30-40 mmHg\*** Moderate to severe chronic edema / lymphedema



## BASIC

A Value fabric with quality compression. Uses double-sided VELCRO® Brand product so it is possible to change band length and trim as limb reduces.

### Available versions

- Lower limb
- Ready-to-Wear (RTW)

**30-40 mmHg\*** Moderate to severe chronic edema / lymphedema



\*This sock is a liner and only provides compression at the foot.

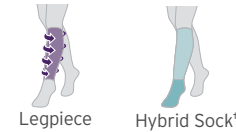
## 4000

The inner sleeve and 4-band design make for easy application. Anatomically contoured to help prevent gapping.

### Available versions

- Lower limb
- Ready-to-Wear (RTW)

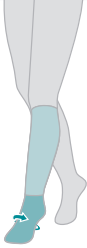







**30-40 mmHg\*** Moderate to severe chronic edema / lymphedema



\*This sock is a liner and only provides compression at the foot.



# PRODUCT ASSORTMENT

	Foot Compression Liner*	Footpiece	Legpiece	Thighpiece**	Armpiece	Ambidextrous Hand Gauntlet Foam Squares
Mild to Moderate 20-30 mmHg						
<b>JOBST® FarrowWrap® LITE</b>		RTW, CM, TTF	RTW, CM, TTF	RTW, CM	RTW, CM, TTF	RTW
<b>JOBST® FarrowHybrid® ADI</b>	RTW					
Moderate to Strong 30-40 mmHg						
<b>JOBST® FarrowWrap® STRONG</b>		RTW, CM, TTF	RTW, CM, TTF	RTW, CM	CM	
<b>JOBST® FarrowWrap® CLASSIC</b>		RTW, CM	RTW, CM	RTW, CM	CM	
<b>JOBST® FarrowWrap® 4000</b>			RTW			
<b>JOBST® FarrowWrap® BASIC</b>		RTW	RTW			

RTW: Ready-To-Wear • CM: Custom-Made • TTF: Trim-To-Fit

\* not to be worn in combination with FarrowWrap footpiece

\*\* includes kneepiece

## Ready-To-Wear (RTW)

Garments are pre-made pieces to fit the majority of patient sizes.

## Trim-To-Fit (TTF)

Garments offer one garment for both active/reduction and maintenance therapy. A Trim-To-Fit garment can be trimmed to adapt as extremity reduces. It can fit most patients in a single size.

## Custom-Made (CM)

Garments are manufactured to the specific limb measurements of each patient to provide a better fit for those limb shapes that do not fit within the RTW size range.

# UPPER EXTREMITY

## JOBST® FarrowWrap® ARMPIECE - SUITABLE FOR 24-HOUR WEAR†

### LITE RTW Armpiece\*



LITE RTW armpiece is an anatomically contoured, effective solution to help control upper extremity edema. It is easy to apply and remove with one hand and designed for mild to moderate edema control.

- 20-30 mmHg

### LITE TTF Armpiece\*



The LITE TTF armpiece can be customized at the point of purchase and will fit most limb sizes. The LITE TTF armpiece can be retrimmed as the patient's edema reduces.

- 20-30 mmHg

### LITE Custom Armpiece\*



The LITE custom armpiece consists of overlapping bands of short-stretch fabric. It generally requires two hands to apply. The short-stretch bands allow garment to be applied at end stretch.

- 20-30 mmHg

### CLASSIC Custom Armpiece\*



CLASSIC custom armpiece is for more severe edema requiring higher levels of compression. It is only available as a custom garment and generally requires two hands to apply. Patients with very large arms or moderate to severe swelling would benefit from a CLASSIC garment.

- 30-40 mmHg

### STRONG Custom Armpiece\*



The STRONG custom armpiece is used in the same situations as CLASSIC but has the added benefit of ease of maintenance.

- 30-40 mmHg

\* Colours: Tan, Black; Sizes: S, M, L; Available in Left or Right, and Short, Regular & Long Lengths

† Per instruction from healthcare professional. It may be necessary to loosen the VELCRO® brand pieces of the garment during night-time wear.

## JOBST® FarrowWrap® HANDPIECE - SUITABLE FOR 24-HOUR WEAR†



### JOBST® FarrowWrap® LITE Hand Gauntlet 20-30mmHg\*

JOBST® FarrowWrap® LITE Hand Gauntlet is ambidextrous and comes with 4mm and 8mm foam squares for added compression to the dorsal hand. Suitable for mild to moderate edema.

Benefits that give your patient greater freedom to enjoy life:

- Foam inserts help distribute pressure and add padding
- Ambidextrous, i.e. can be used on either hand
- Durable

## LINER



### Standard Liner\*\*

Liner is only required for trim-to-fit custom armpiece. There is no compression in liner.

The liner provides a smooth base and skin protection prior to applying the outer wrap piece. In addition, daily washing of the outer wrap piece is not recommended due to the nature of the material and the VELCRO® brand hook-and-loop fasteners. However, a fresh liner can be worn daily as the liner can be washed as frequently as needed.



### TG® Soft Liners

Similar to the Farrow Standard Liner, the TG® Soft Liners provide a light cushion and skin protection to be donned prior to applying the outer wrap piece. The TG® Soft Liners are made with cotton, are open-toe, and may better suit sensitive skin. Liners should be laundered and replaced daily. It is recommended to order more than one.

\* Colours: Tan; Sizes: XS, S, M, L

\*\* Colours: Tan; Sizes: S, L

† Per instruction from healthcare professional. It may be necessary to loosen the VELCRO® brand pieces of the garment during night-time wear.



# LOWER EXTREMITY

## JOBST® FarrowWrap® THIGHPIECE AND LEGPIECE - SUITABLE FOR 24-HOUR WEAR††

**LITE Legpiece\*\***



**CLASSIC Legpiece\*\***



**STRONG Legpiece\*\***



**BASIC Legpiece\*\***



**LITE Thighpiece**



**CLASSIC Thighpiece**



**STRONG Thighpiece**



JOBST® FarrowWrap® BASIC\* is an exceptional value and features trimmable bands and adjustable VELCRO® Brand products so the garment can be trimmed as the limb reduces. BASIC garments can be machine washed and dried.†

- 30-40 mmHg

Available in Legpiece only.

JOBST® FarrowWrap® LITE\* is designed for mild to moderate edema control. Available in Ready-To-Wear (RTW), Trim-To-Fit (TTF), and Custom-Made (CM). LITE garments can be machine washed and dried.†

- 20-30 mmHg
- LITE Thighpiece comes with a LITE Kneepiece

JOBST® FarrowWrap® CLASSIC\* is designed for moderate to severe edema control. It is available in Ready-To-Wear (RTW) and Custom-Made (CM) garments.

- Hand wash only.†
- 30-40 mmHg
  - CLASSIC Thighpiece comes with a STRONG Kneepiece

JOBST® FarrowWrap® STRONG\* is designed for moderate to severe edema control and is available in Ready-To-Wear (RTW) and Custom-Made (CM) sizes. STRONG garments can be machine washed and dried.†

- 30-40 mmHg
- STRONG Thighpiece comes with a STRONG Kneepiece



All Thighpieces come with a Kneepiece

\* Colours: Tan; Sizes: XS, S, M, L, XL; Available in Short, Regular and Tall Lengths

\*\* Colours: Tan; Sizes: XS, S, M, L, XL; Available in Regular and Tall Lengths

† Follow care instructions in the product packaging.

†† Per instruction from healthcare professional. It may be necessary to loosen the VELCRO® brand pieces of the garment during night-time wear.

# LOWER EXTREMITY

## JOBST® FarrowWrap® FOOTPIECE - SUITABLE FOR 24-HOUR WEAR†

### LITE Footpiece\*



LITE footpiece provides compression for mild to moderate edema.

- 20-30 mmHg

### CLASSIC Footpiece\*



CLASSIC provides compression for moderate to severe edema. Durable construction.

- 30-40 mmHg

### STRONG Footpiece\*



STRONG footpiece provides compression for moderate to severe edema.

- 30-40 mmHg

### BASIC Footpiece\*



BASIC footpieces provide compression for moderate to severe edema.

- 30-40 mmHg

## Customizing garments

TTF footpieces can be instantly customised using our proprietary TTF innovation. Must be trimmed before donning.

\* Colours: Tan; Sizes: XS, S, M, L, XL; Available in Regular and Long Lengths

† Per instruction from healthcare professional. It may be necessary to loosen the VELCRO® brand pieces of the garment during night-time wear.



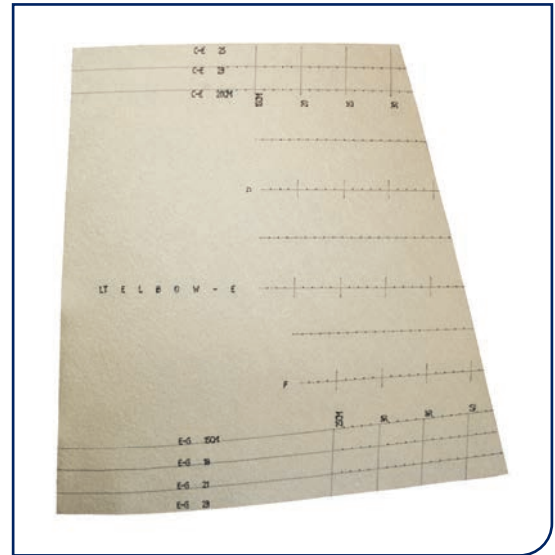
# TRIM-TO-FIT™

Trim-To-Fit™ compression garments can be customized to a patient's limb in a matter of minutes. Only one garment is needed during the decongestion phase since the garments are trimmable as the edema reduces.

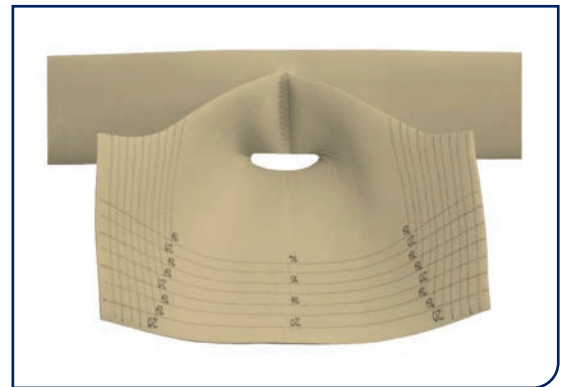
## Trim-To-Fit™ Legpiece



## Trim-To-Fit™ Armpiece



## Trim-To-Fit™ Footpiece



## Customizing garments made easy with Trim-to-Fit

TTF garments can be customized on site to fit a variety of patients. You can easily retrim the garment if the patient's edema reduces. There are two TTF sizes which cover 6 standard sizes. TTF is available in STRONG and LITE fabrics.

## **JOBST® FarrowWrap® LEGPIECE - SUITABLE FOR 24-HOUR WEAR†**



### **JOBST® FarrowWrap® 4000\***

JOBST® FarrowWrap® 4000 legpiece is designed for moderate to severe edema and is easy to apply with just four bands and inner sleeve. It is available in RTW sizing. 4000 garments can be machine washed and dried. Available in 30-40mmHg only.

Comes with a hybrid liner.



### **Standard Liner\*\***

- Fits up to 70cm calf circumference

The liner provides a smooth base and skin protection prior to applying the outer piece, and can be washed daily.



### **TG® Soft Liners**

- Available in knee high open toe, thigh high open toe and arm
- Fits up to 70cm circumference for AD, AG and Arm liners

Liners are worn with a footpiece/legpiece/thighpiece combo.

\* Colours: Tan, Black; Sizes: XS, S, M, L

\*\* Colours: Tan; Sizes: S, L

† Per instruction from healthcare professional. It may be necessary to loosen the VELCRO® brand pieces of the garment during night-time wear.

# THE THERAPEUTIC CONTINUUM OF CARE FOR EVERY PATIENT JOURNEY

It is critical to take proactive measures using an integrated approach combining compression therapy with treatments that support optimal wound healing.\* Essity supports the Continuum of Care approach that enhances outcomes by combining therapies and choosing patient-centered devices to optimize results.



## REMOVE EXUDATE & BACTERIA



**Cutimed® Sorbion®  
Sorbact®**  
featuring Sorbact® Technology



**Cutimed® Siltec®  
Sorbact®**  
featuring Sorbact® Technology



**Cutimed® Sorbion®  
Sachet**  
Superabsorbent Dressing



**Cutimed® Sorbion®  
Sachet XL**  
Superabsorbent Dressing



## COMPRESS & REDUCE EDEMA

**JOBST® FarrowWrap®**  
Adjustable Short Stretch  
Compression



**JOBST® Compri 2**  
Two-Layer Bandaging

**JOBST® Elvarex®**  
Custom Compression Garments



**JOBST® Comprilan®**  
Short Stretch  
Compression Bandage

\*Open wounds must be covered with an appropriate dressing before the liner and/or compression garment is put on.



To learn more about  
JOBST® products and services, call  
1-877-978-5526  
or visit  
[www.jobstcanada.com](http://www.jobstcanada.com) | [www.essity.com](http://www.essity.com)

VELCRO® is a Registered Trademark of Velcro BVBA.  
Please refer to the product label and / or package insert for full instructions on the safe use of these products.



JOBST®,  
an Essity brand



[jobstcanada.com](http://jobstcanada.com) [essity.com](http://essity.com)

Essity  
1275 North Service Road West, Suite 800  
Oakville, ON Canada L6M 3G4  
Tel. 1-877-978-5526 Fax 1-877-978-9703  
62653E R4 132666 ©Essity Hygiene and Health AB, 2024 A24